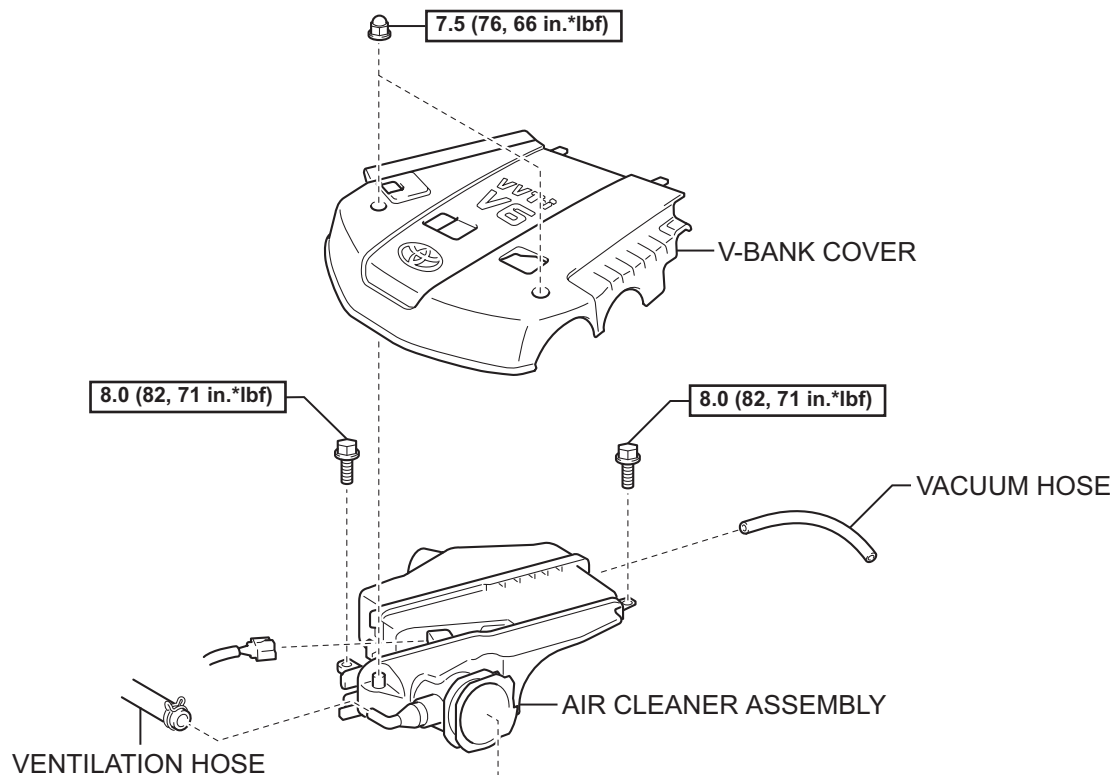
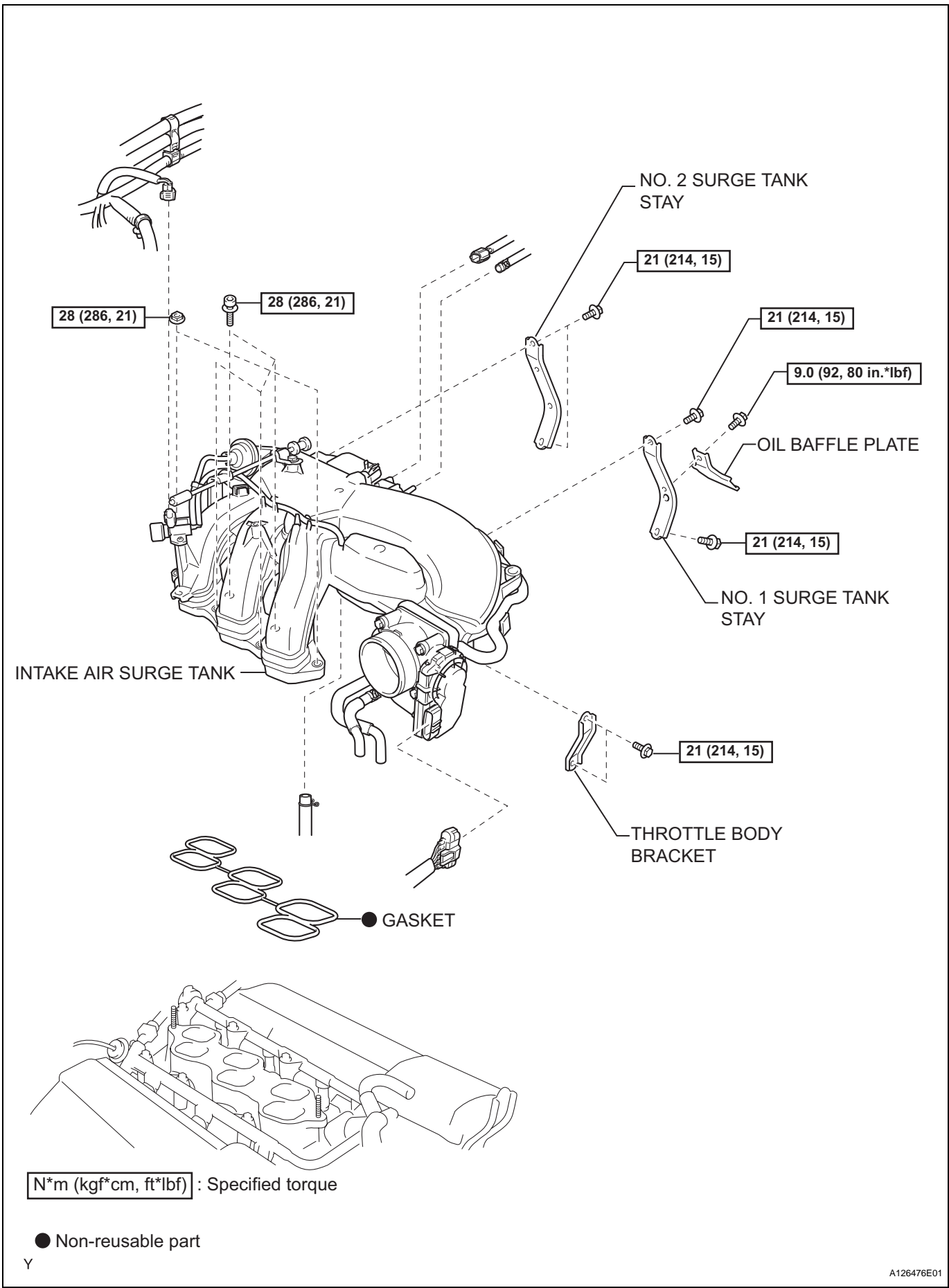


CAMSHAFT TIMING OIL CONTROL VALVE ASSEMBLY COMPONENTS



N*m (kgf*cm, ft*lbf) : Specified torque

ES



CAMSHAFT TIMING
OIL CONTROL VALVE
ASSEMBLY

9.0 (92, 80 in.*lbf)

CAMSHAFT TIMING
OIL CONTROL VALVE
ASSEMBLY

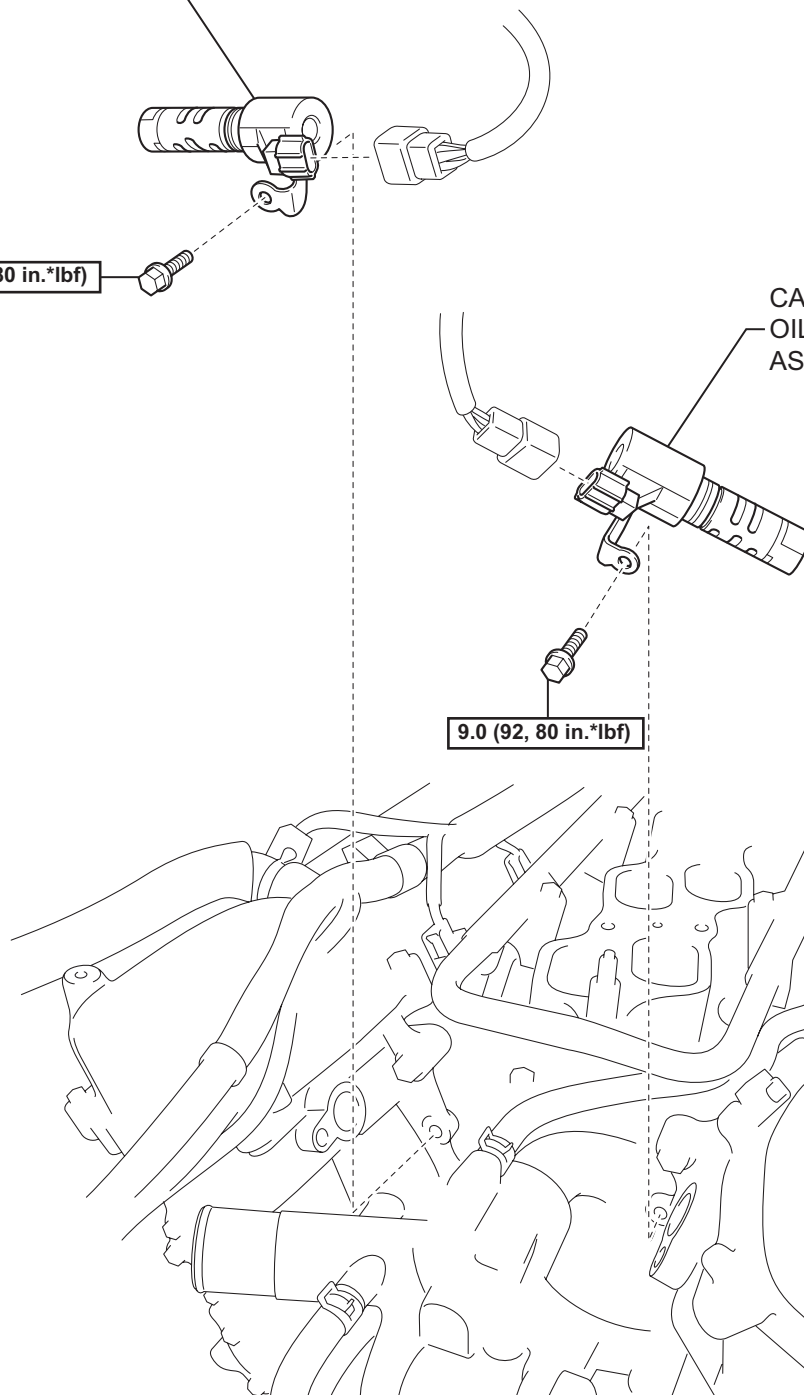
9.0 (92, 80 in.*lbf)

N*m (kgf*cm, ft*lbf) : Specified torque

Y

A126418E01

ES



ON-VEHICLE INSPECTION

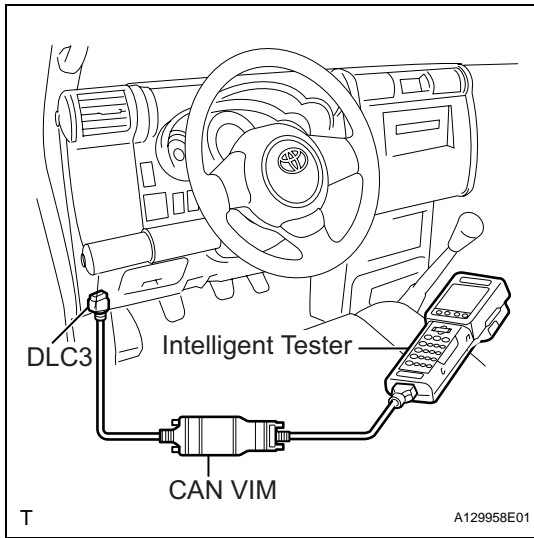
1. INSPECT CAMSHAFT TIMING OIL CONTROL VALVE ASSEMBLY

- (a) Check the operation.
 - (1) Turn the ignition switch to ON.
 - (2) Turn the intelligent tester ON.
 - (3) Start the engine and warm it up.
 - (4) Select the following menu items: DIAGNOSIS / ENHANCED OBD II / ACTIVE TEST / PRIMARY / VVT CTRL B1.
 - (5) Operate the OCV using the intelligent tester, then check the engine speed.

Standard

Tester Operation	Specified Condition
OCV OFF	Normal engine speed
OCV ON	Rough idling or engine stalls

If the operation is not as specified, check the camshaft timing oil control valve, wire harness and ECM.



ES